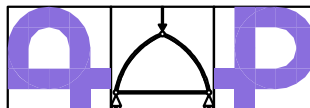




COMUNE DI BORGO SAN LORENZO (FI)  
SERVIZIO TECNICO

Piazza Dante n.2  
50032 - Borgo San Lorenzo (FI)



ING. ANDREA PAGLIAZZI  
INGEGNERE CIVILE

Via di Novoli, 97/D  
50127 Firenze  
Tel. 3288264047

COMUNE DI BORGO SAN LORENZO (FI)  
PROGETTO DI MIGLIORAMENTO SISMICO DELLA SCUOLA PRIMARIA  
"DON MINZONI" SITUATA IN VIA DON MINZONI, LOC. CAPOLUOGO  
CON RIFACIMENTO DELL'ATRIO DI INGRESSO  
PROGETTAZIONE ESECUTIVA

COMMITTENTE	ELABORATO
COMUNE DI BORGO SAN LORENZO	STRUTTURALE -
Servizio Tecnico Piazza Dante n.2 50032 - Borgo San Lorenzo (FI)	<u>RILIEVO GEOMETRICO STRUTTURALE E SAGGI ESEGUITI</u>
	- Armature travi di fondazione piano interrato/piano terra - Armature travi piano terra - Armature travi piano primo - Armature travi piano sottotetto/copertura

IL TECNICO INCARICATO	TIMBRO		COLLABORAZIONE AL PROGETTO ARCHITETTONICO
Ing. Andrea Pagliazzi Via di Novoli, 97/D 50127 Firenze Tel. 3288264047 e-mail: a.pagliazzi@gmail.com			Arch. Paola Guidotti Arch. Andrea Sighieri Dott.ssa Sandra Gualtieri

FILE	REVIS. N°	DATA	TAV.	SCALA
BSL_ST_681	0	FEBBRAIO 2018	4/20	-



Rev.	Data	Descrizione / Motivo della revisione	Redatto	Controllato / Approvato
0	Febbraio 2018	Progetto esecutivo	Dott. Ing. Guido BRESCI	Dott. Ing. Andrea PAGLIAZZI

E' fatto obbligo alla ditta esecutrice dei lavori verificare le quote riportate nella presente documentazione, confrontarle con quelle del progetto architettonico e del progetto della ditta prefabbricatrice. Eventuali difformità dovranno essere comunicate alla D.L. che provvederà alle eventuali revisioni o chiarimenti.

PROPRIETA' RISERVATA. VIETATA LA RIPRODUZIONE E LA DIFFUSIONE

Le armature delle travi riportate nelle seguenti  
sezioni sono state ricavate dal progetto strutturale  
originario e verificate a campione con saggi.

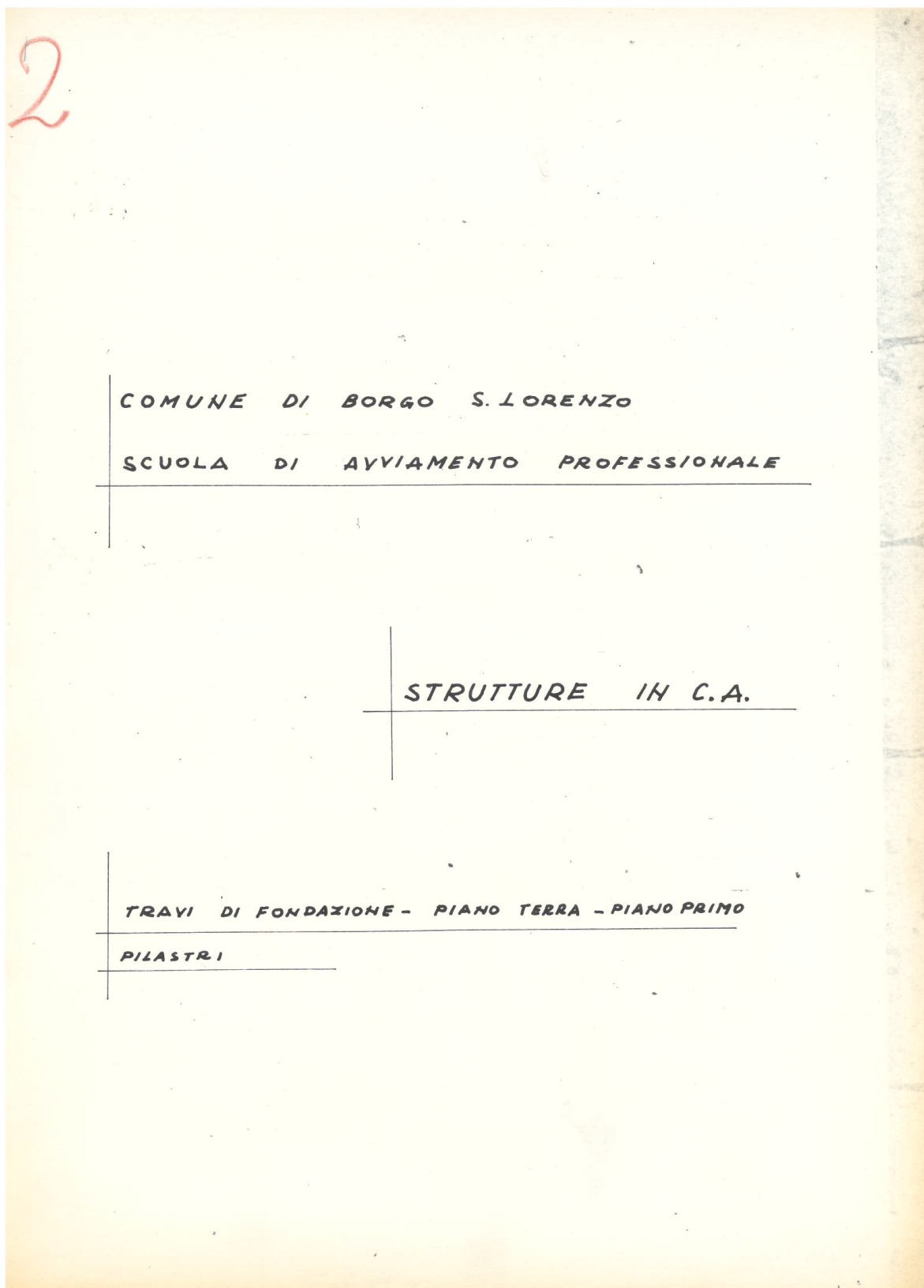
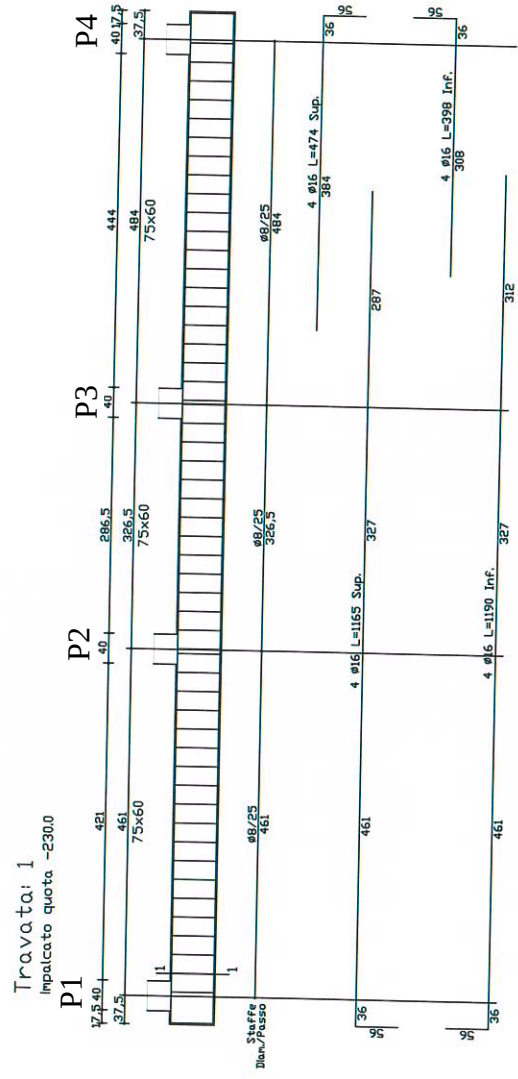


Figura 1 - Frontespizio originale del progetto strutturale conservato presso l'Archivio Comunale di Borgo San Lorenzo

Armature travi di fondazione  
piano interrato  
Quota -2,30 m





Travata: 3  
inpalcato quota -230.0

P4

P8

P14

24.27  
37.5  
460.5  
494  
75x60  
285  
335  
30  
75x60  
335  
28  
95  
95  
128

11  
1

Staffe  
Dim./Passo

Ø8/25  
494  
335  
335  
28  
95  
95  
128

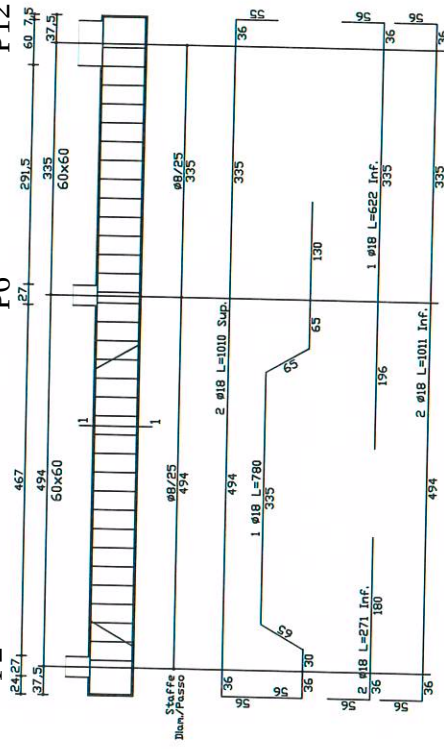
4 Ø16 L=1004 Sup.  
4 Ø16 L=1004 Inf.

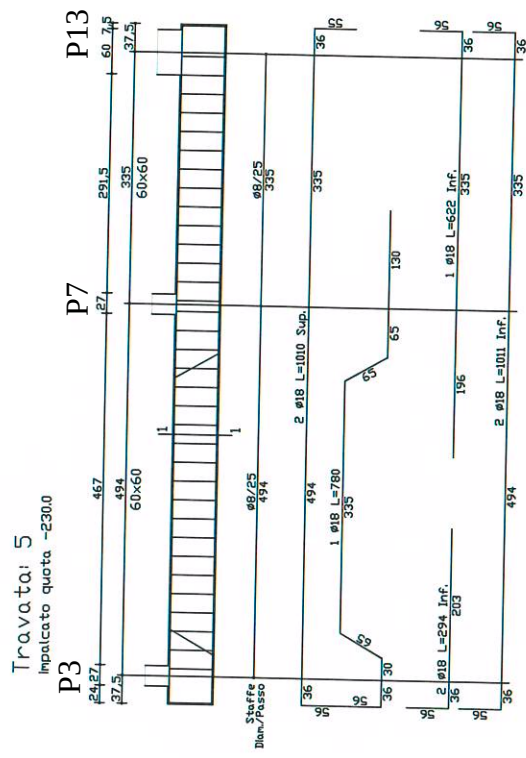
Impalcato quota -230.0

P2

P6

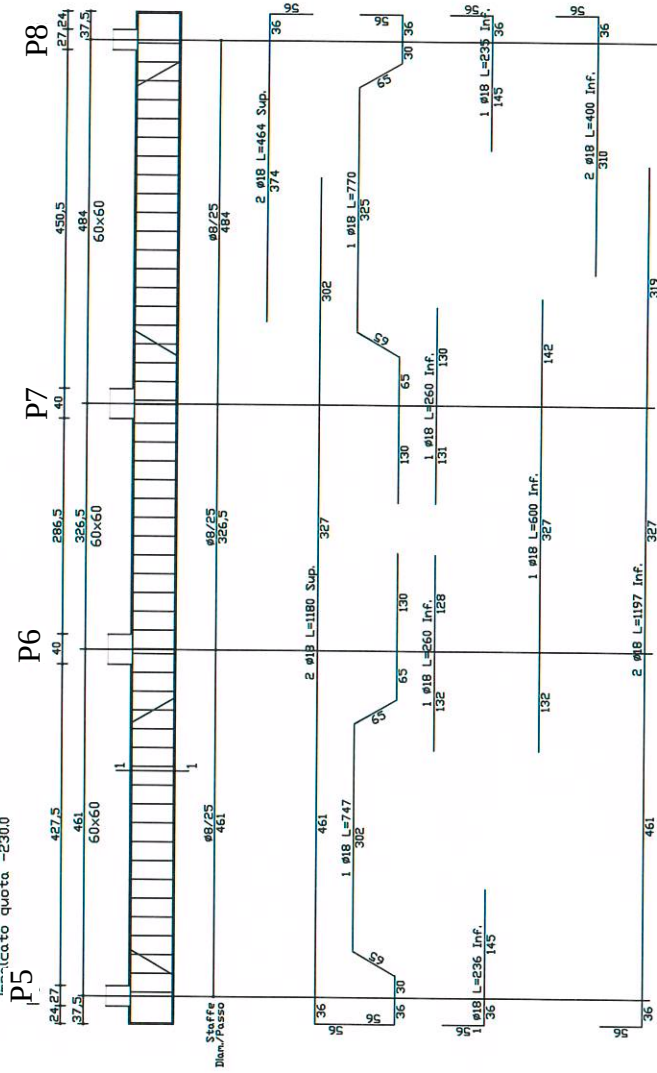
P12



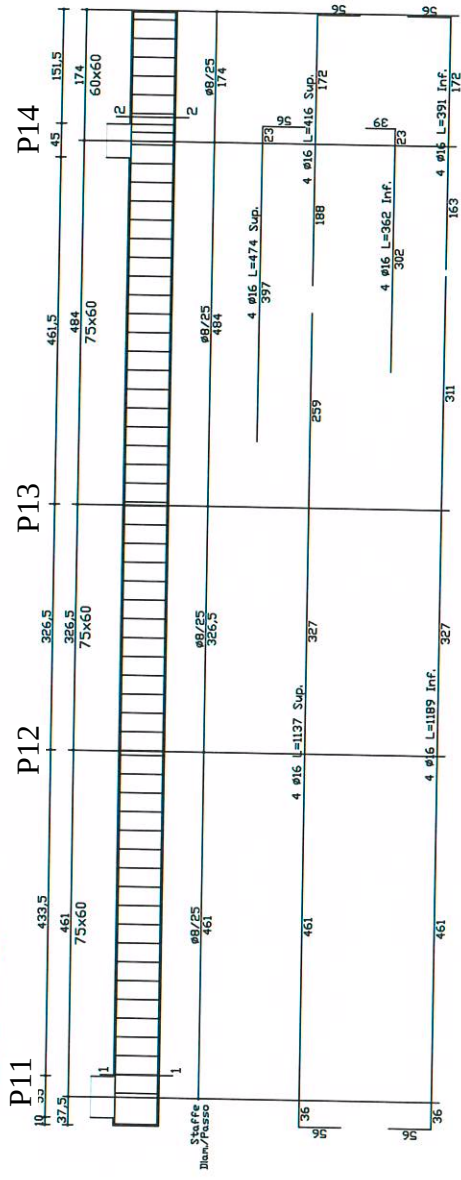




Travata: 6  
 Indicato quota -230.0

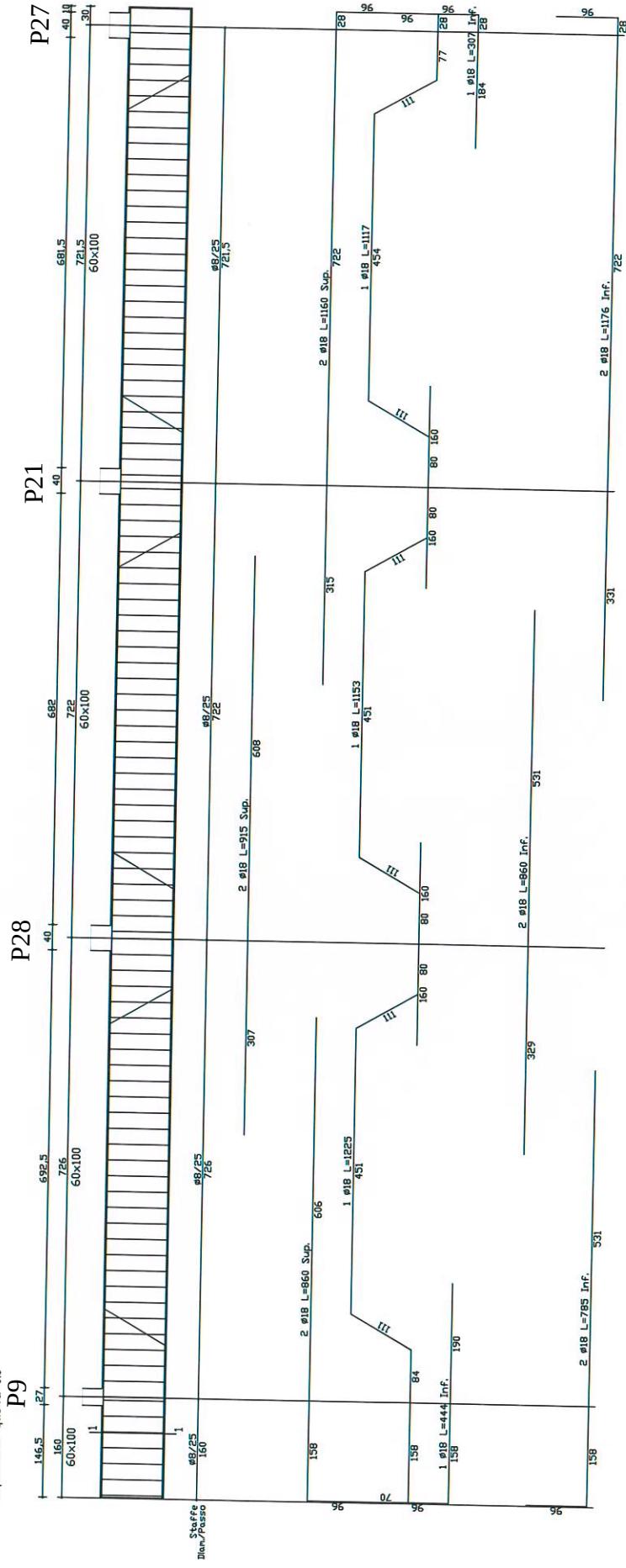


Travata: 7  
Impalcato quota -2300



Armature travi di fondazione  
piano terra  
Atrio  
Quota +0,00 m

69



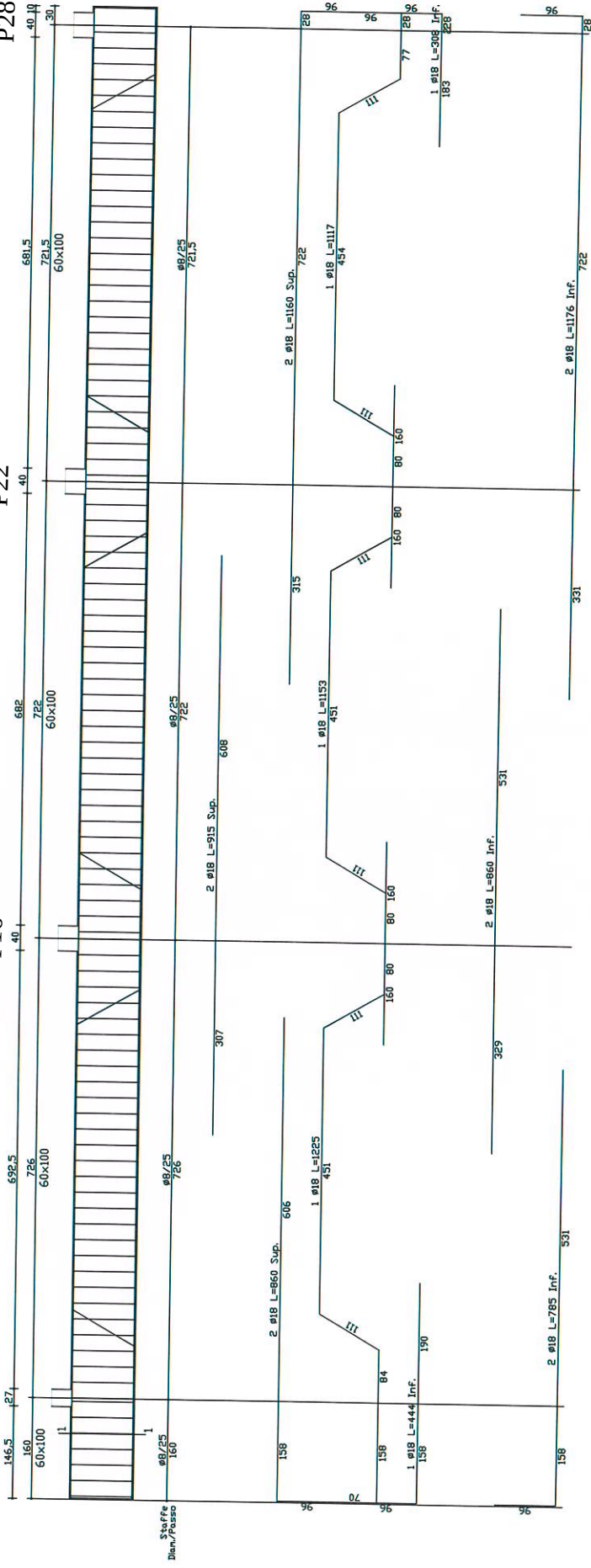
Travata: 16  
Impalcato quota 0.0

P10

P16

P22

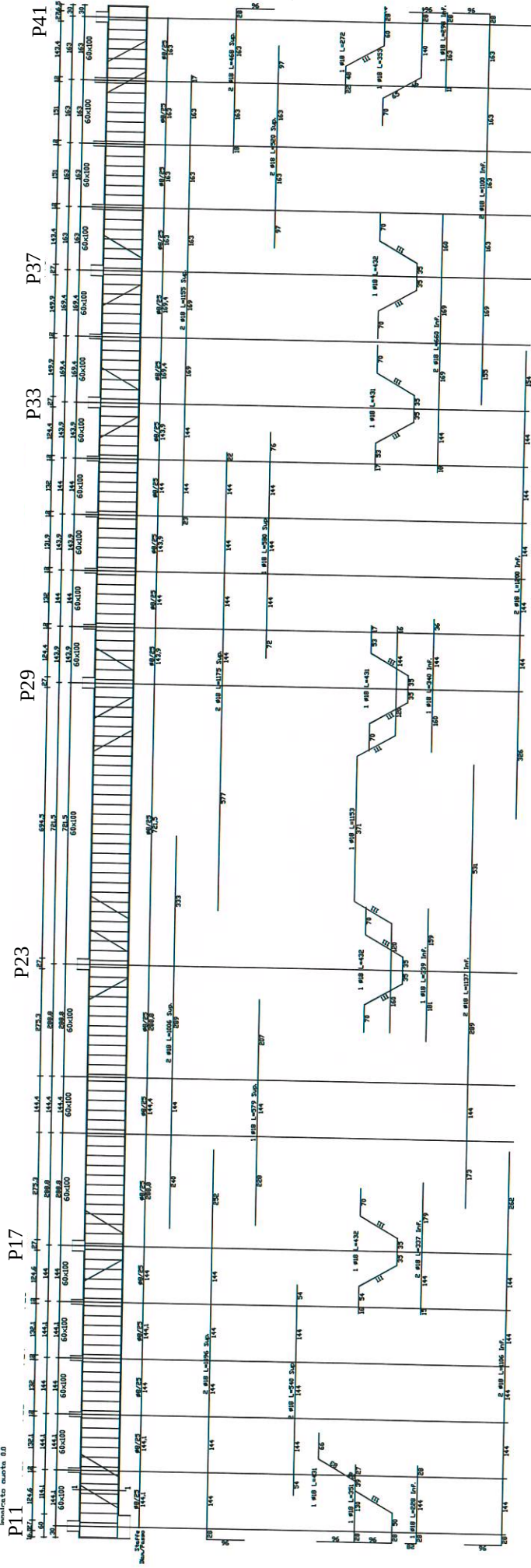
P28





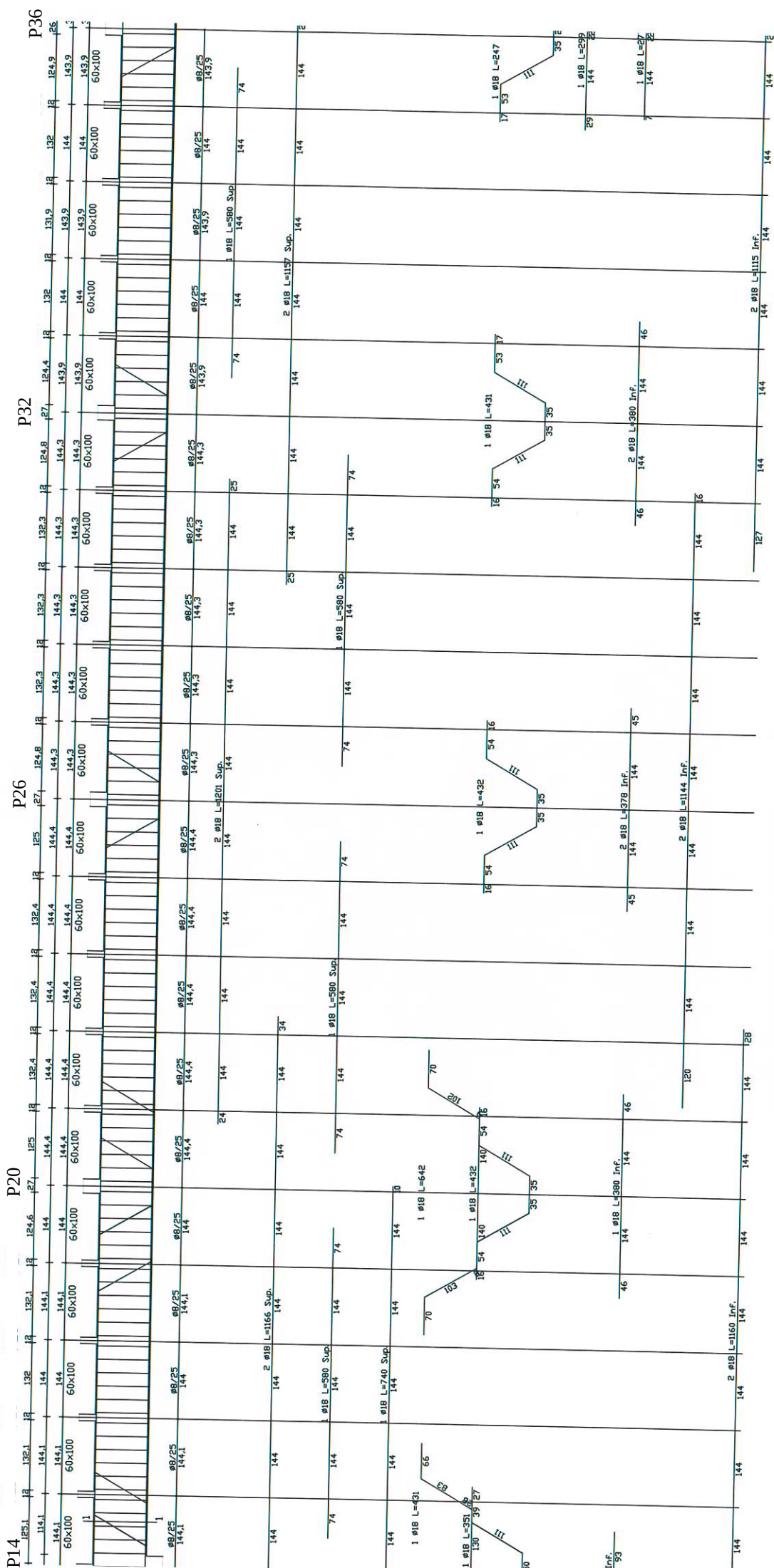
Armature travi di fondazione  
piano terra  
Scuola elementare  
Quota +0,00 m

Travata 19  
Indicada arriba 19

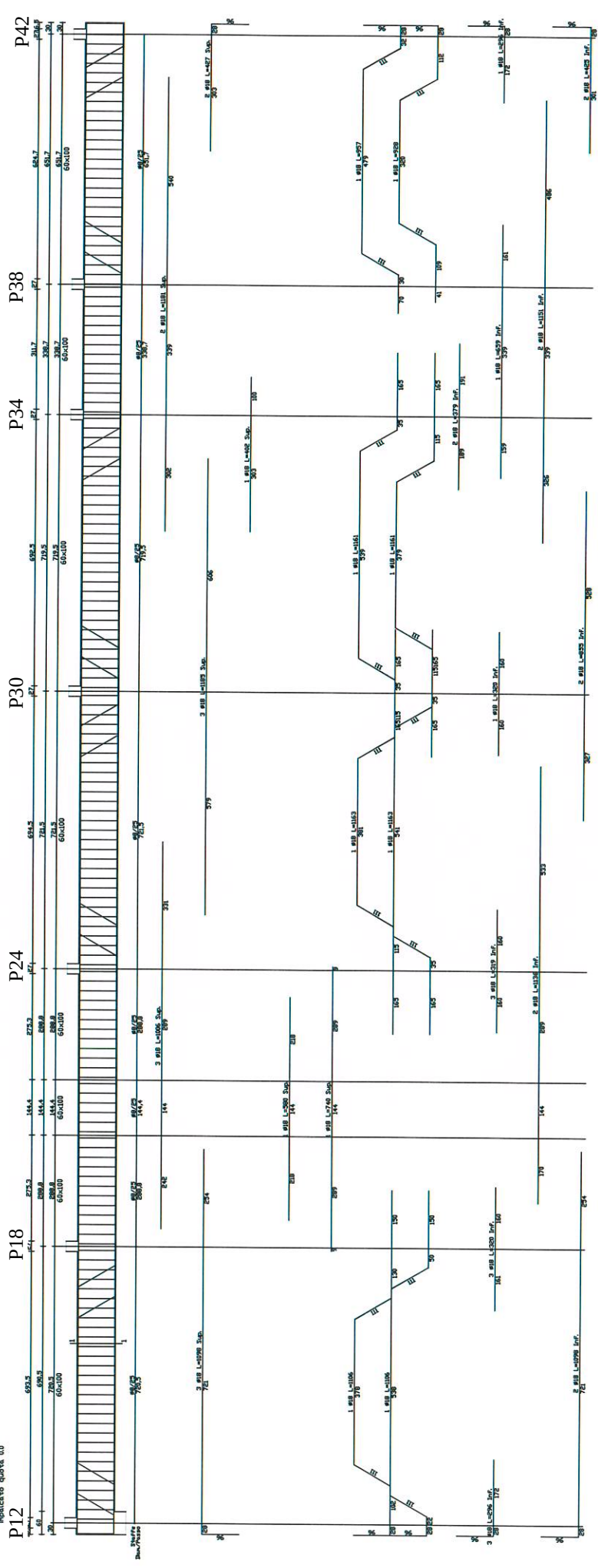




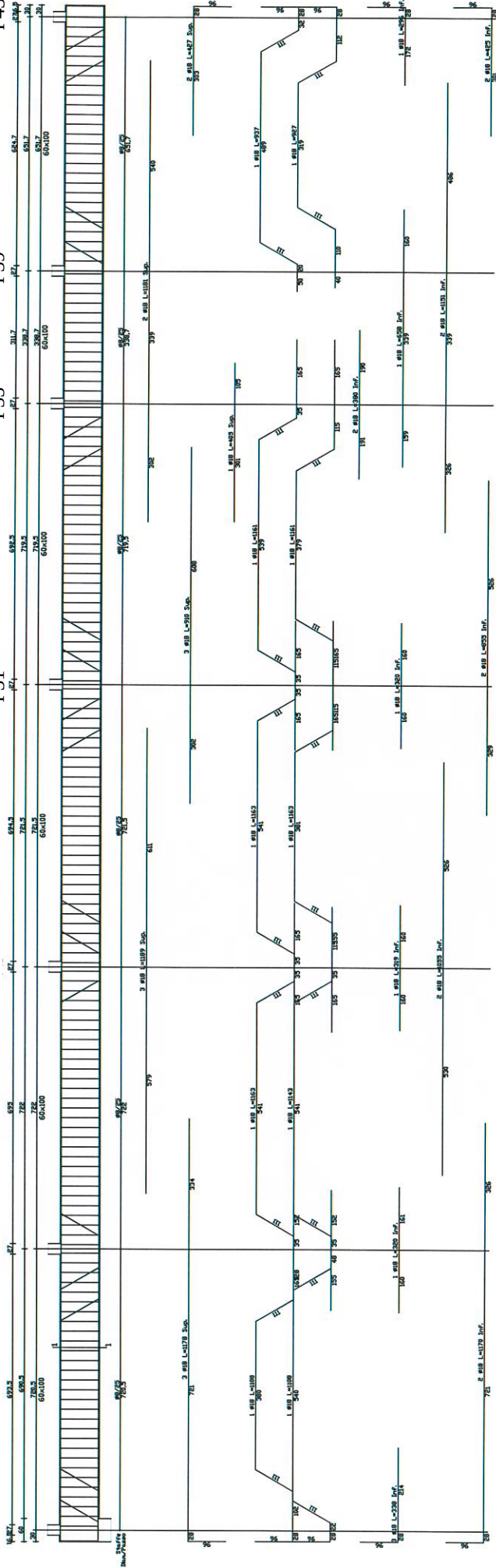
travata: 20  
palcato quota 0.0



Travata: 21  
Iniziale quota: 0.0



p43

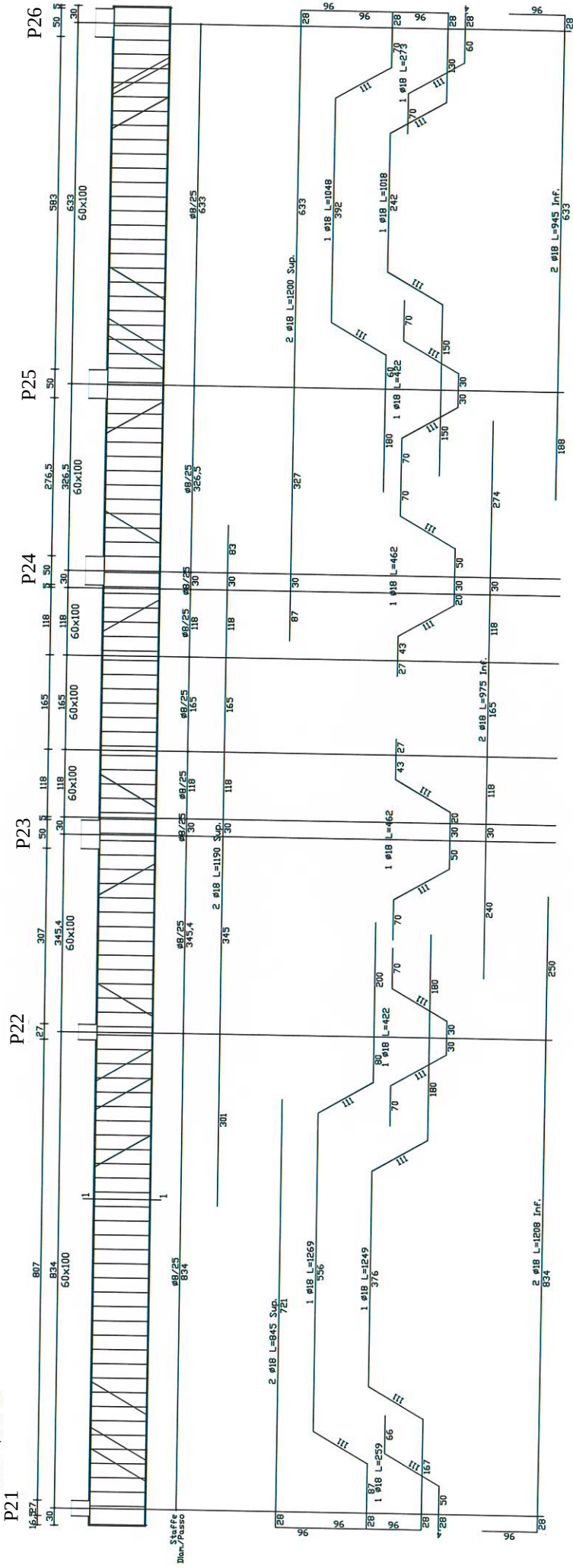


P15





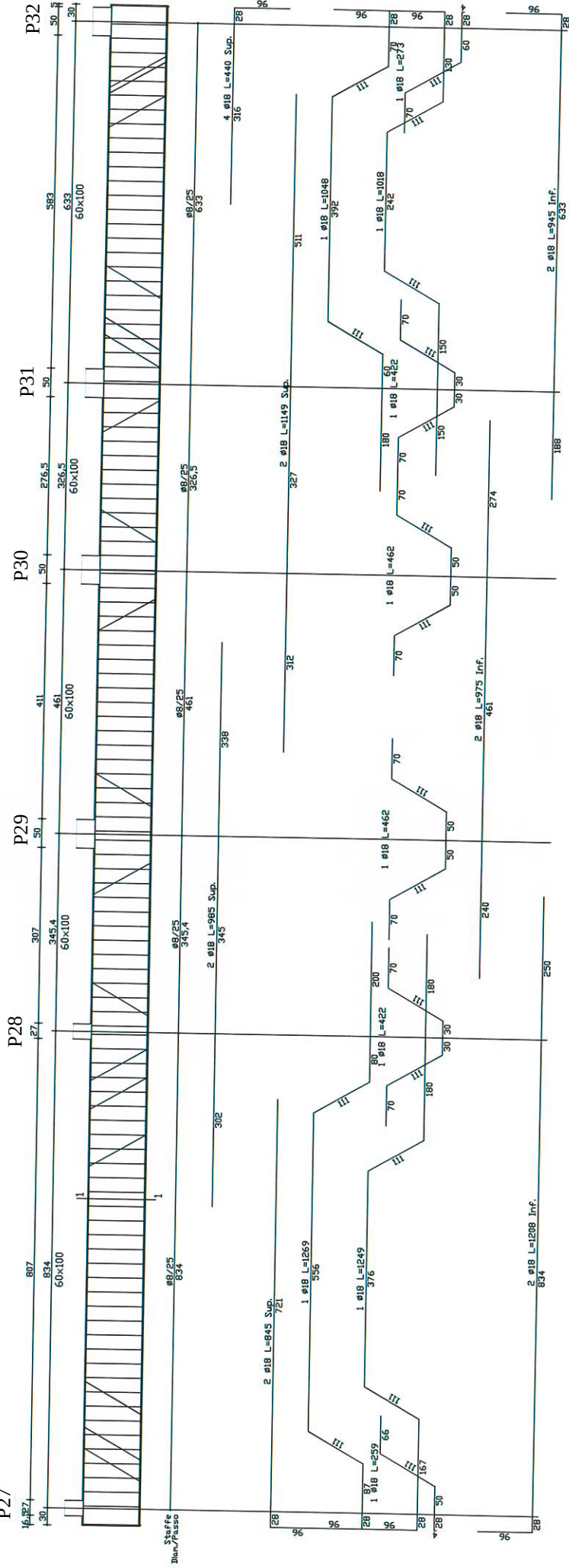
P21



Travata: 25

Impalcato quota 0.0

P27



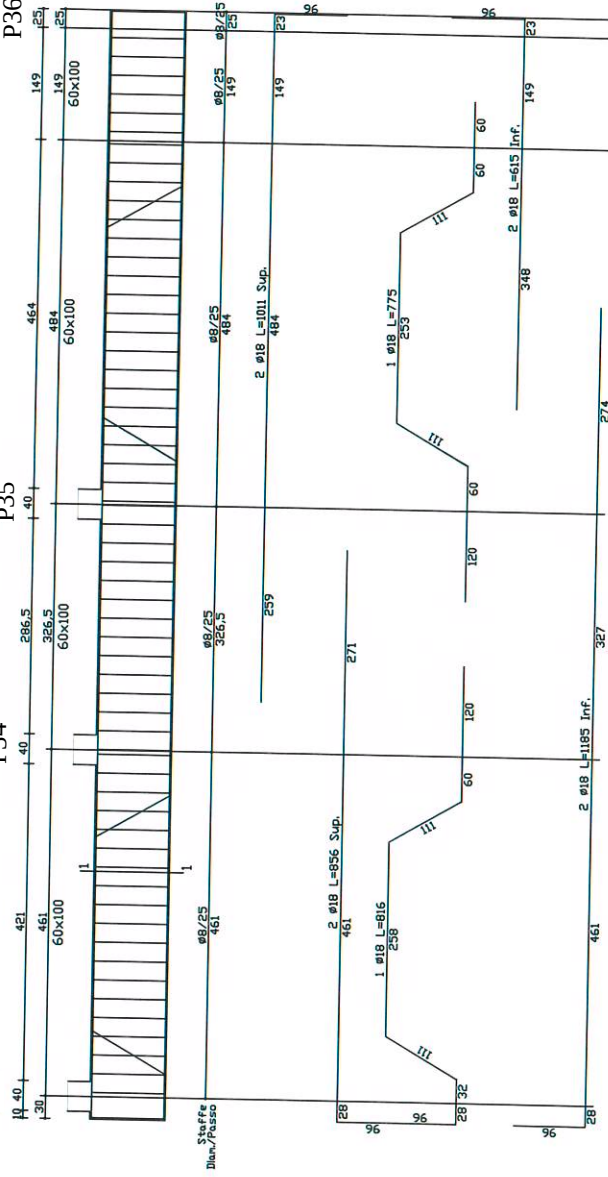
Travata: 26  
Impalcato quota 0.0

P33

P34

P35

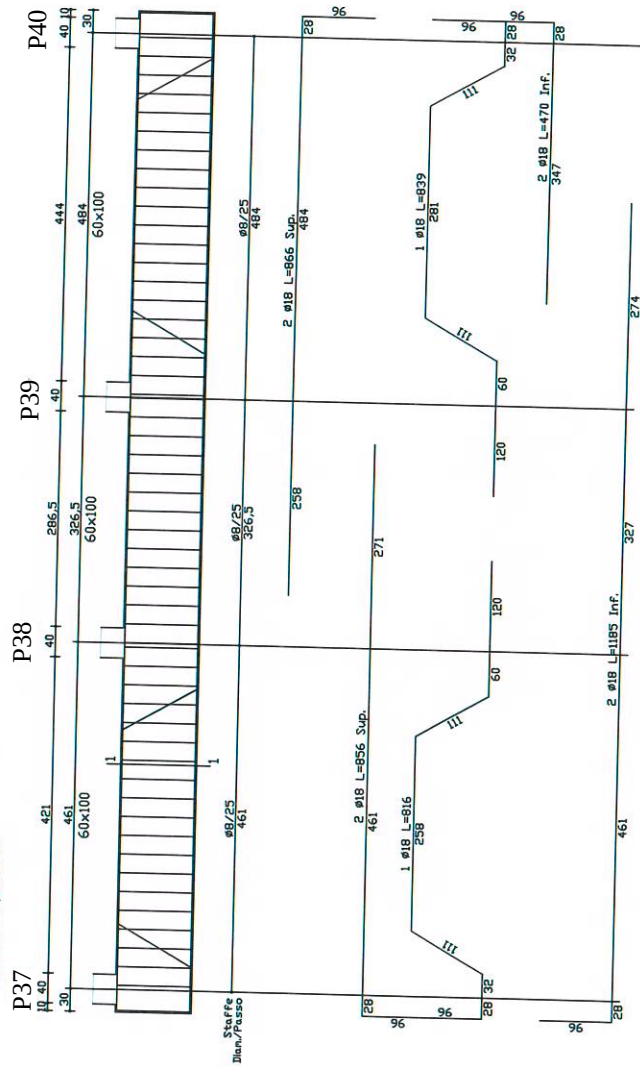
P36



[illegible]



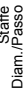
Travata: 28  
Impalcato quota 0.0



[illegible]

Armature travi piano terra  
porzione interrata  
Quota +0,00 m

## impalcato quota 0.0



Armature travi piano copertura

Atrio

Quota +374,00 m

Technical drawing of a reinforced concrete slab (L 40/27x80/35) showing reinforcement details for different spans (P9, P21, P27) and supports (Dm/Passo). The drawing includes dimensions, reinforcement bar sizes (e.g., 16, 10, 12), and lengths (e.g., L=1004, L=1050).

**Reinforcement Details:**

- Span P9:**
  - Top: 2  $\phi 16$  L=258 Sup.
  - Bottom: 2  $\phi 16$  L=1020 Sup.
- Span P21:**
  - Top: 2  $\phi 16$  L=174 Sup.
  - Bottom: 2  $\phi 16$  L=1195 Sup.
- Span P27:**
  - Top: 2  $\phi 16$  L=592 Sup.
  - Bottom: 2  $\phi 16$  L=948 Inf.
- Supports (Dm/Passo):**
  - Top: 2  $\phi 16$  L=1004
  - Bottom: 2  $\phi 16$  L=1050

**Dimensions and Labels:**

- Slab thickness: 12
- Span lengths: 27x80, 40x80, 40x80
- Reinforcement bar sizes: 16, 10, 12
- Reinforcement lengths: L=1004, L=1050, L=1130, L=1185, L=1200, L=1250, L=1300, L=1350, L=1400, L=1450, L=1500, L=1550, L=1600, L=1650, L=1700, L=1750, L=1800, L=1850, L=1900, L=1950, L=2000, L=2050, L=2100, L=2150, L=2200, L=2250, L=2300, L=2350, L=2400, L=2450, L=2500, L=2550, L=2600, L=2650, L=2700, L=2750, L=2800, L=2850, L=2900, L=2950, L=3000, L=3050, L=3100, L=3150, L=3200, L=3250, L=3300, L=3350, L=3400, L=3450, L=3500, L=3550, L=3600, L=3650, L=3700, L=3750, L=3800, L=3850, L=3900, L=3950, L=4000, L=4050, L=4100, L=4150, L=4200, L=4250, L=4300, L=4350, L=4400, L=4450, L=4500, L=4550, L=4600, L=4650, L=4700, L=4750, L=4800, L=4850, L=4900, L=4950, L=5000, L=5050, L=5100, L=5150, L=5200, L=5250, L=5300, L=5350, L=5400, L=5450, L=5500, L=5550, L=5600, L=5650, L=5700, L=5750, L=5800, L=5850, L=5900, L=5950, L=6000, L=6050, L=6100, L=6150, L=6200, L=6250, L=6300, L=6350, L=6400, L=6450, L=6500, L=6550, L=6600, L=6650, L=6700, L=6750, L=6800, L=6850, L=6900, L=6950, L=7000, L=7050, L=7100, L=7150, L=7200, L=7250, L=7300, L=7350, L=7400, L=7450, L=7500, L=7550, L=7600, L=7650, L=7700, L=7750, L=7800, L=7850, L=7900, L=7950, L=8000, L=8050, L=8100, L=8150, L=8200, L=8250, L=8300, L=8350, L=8400, L=8450, L=8500, L=8550, L=8600, L=8650, L=8700, L=8750, L=8800, L=8850, L=8900, L=8950, L=9000, L=9050, L=9100, L=9150, L=9200, L=9250, L=9300, L=9350, L=9400, L=9450, L=9500, L=9550, L=9600, L=9650, L=9700, L=9750, L=9800, L=9850, L=9900, L=9950, L=10000

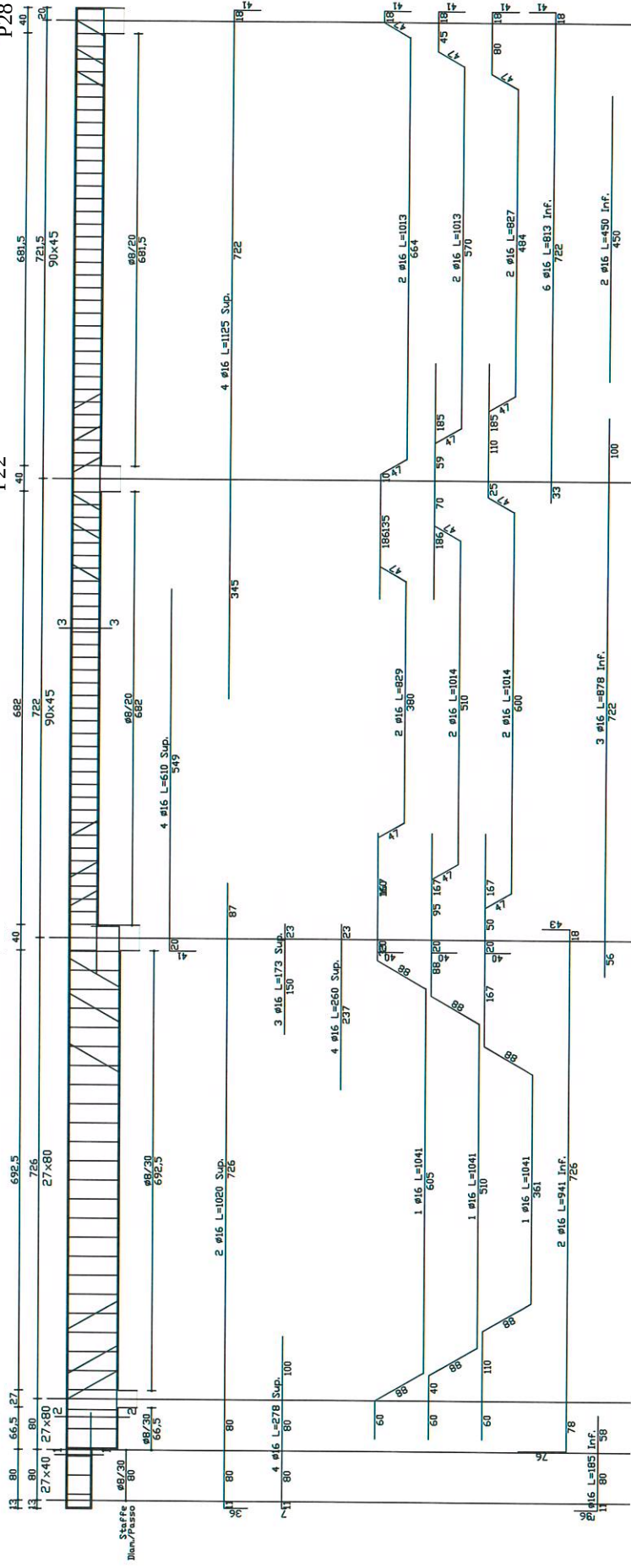
Travata: 32  
Impalcato quota 374.0

P10

P16

P22

P28



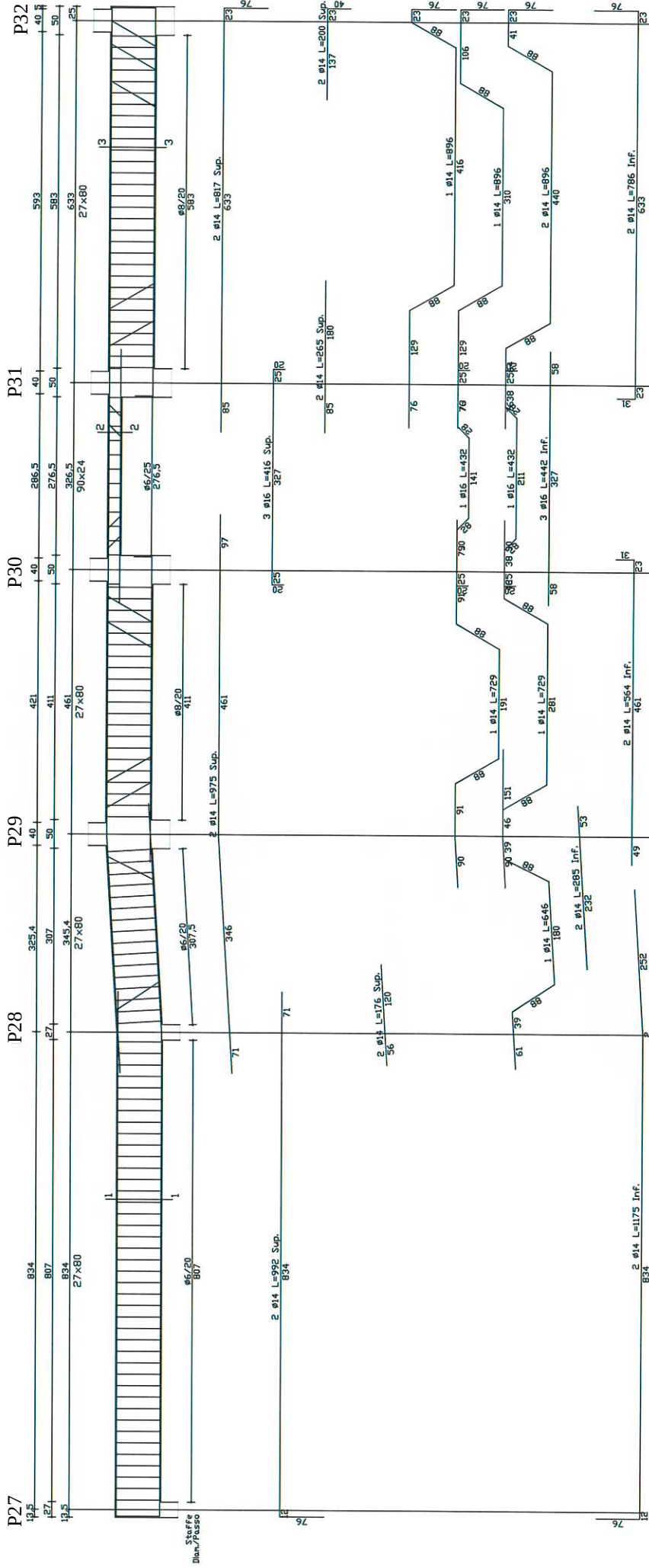
Armature travi piano primo  
Scuola elementare  
Quota +389,00 m



The drawing illustrates a reinforced concrete slab (P16) with various dimensions and reinforcement specifications. Key features include:

- Dimensions:** Overall width is 834 units. Section lengths are 320.4, 307, 345.4, and 27x60 units.
- Reinforcement:** Top bars are labeled as 2 #14 L=972 Sup. and bottom bars as 2 #14 L=564 Inf. Other bar sizes include #6/25, #6/20, and #6/16.
- Section Views:** Sections P17, P18, P19, and P20 show cross-sections of the slab with internal reinforcement details.
- Labels:** "Staffe" indicates stirrups, and "Dura/Passo" likely refers to the spacing or type of reinforcement.

Travata: 34  
Impalcato quota 389,0



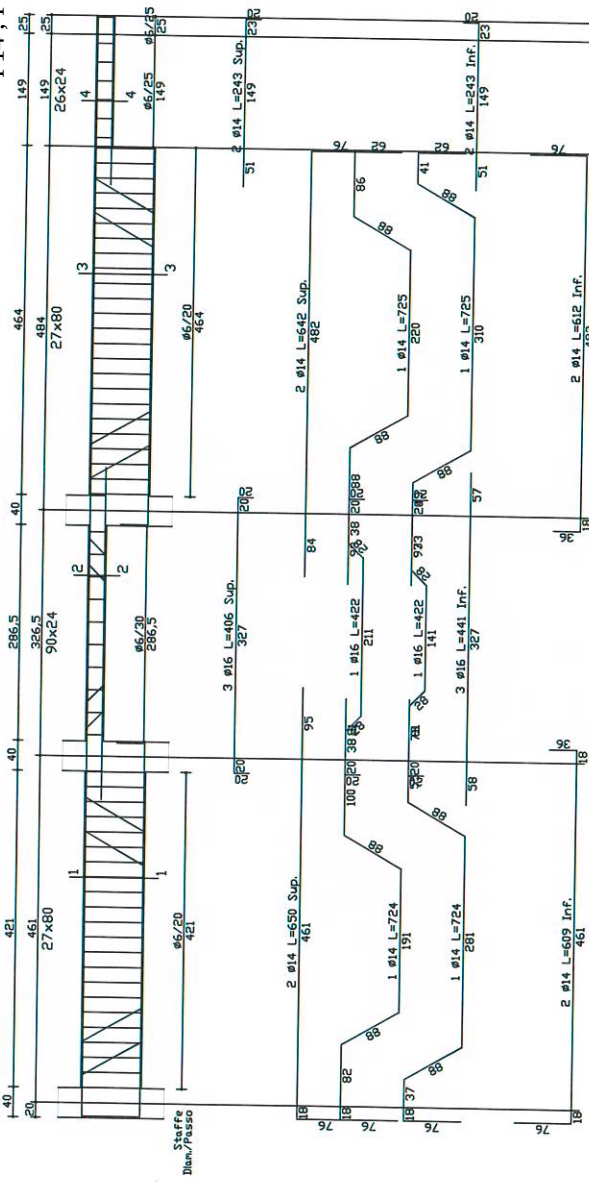
Travata: 42,40  
Impalcato quota 395,0

P11, P5

P12, P6

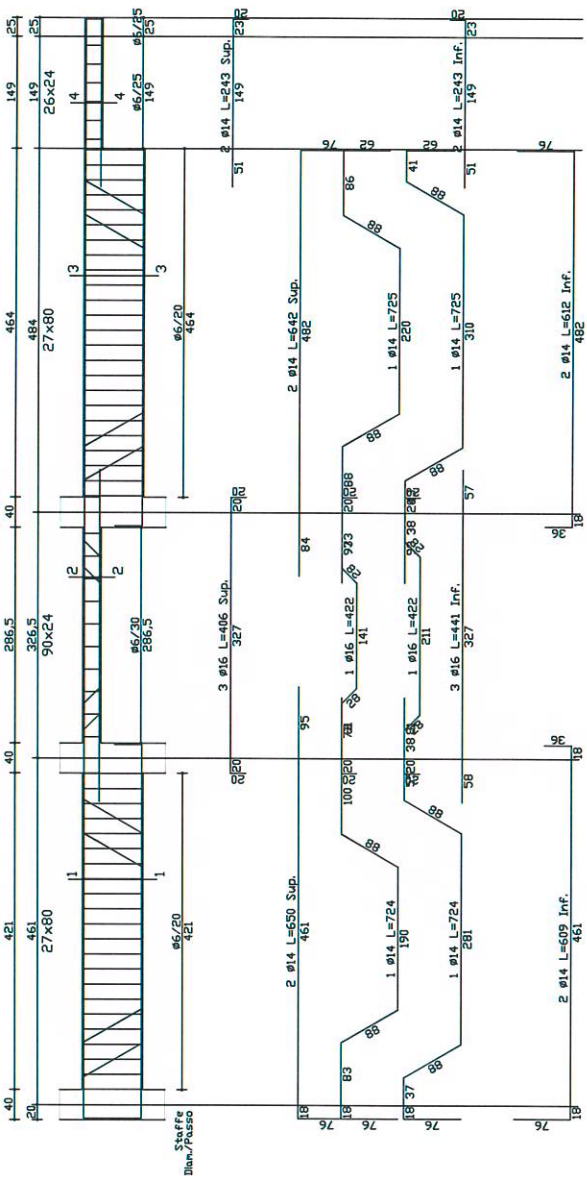
P13, P7

P14, P8



Travata: 47, 49  
Impalcato quota 3950

P33, P37 P34, P38 P35, P39 P36, P40



Travi: 50, 36

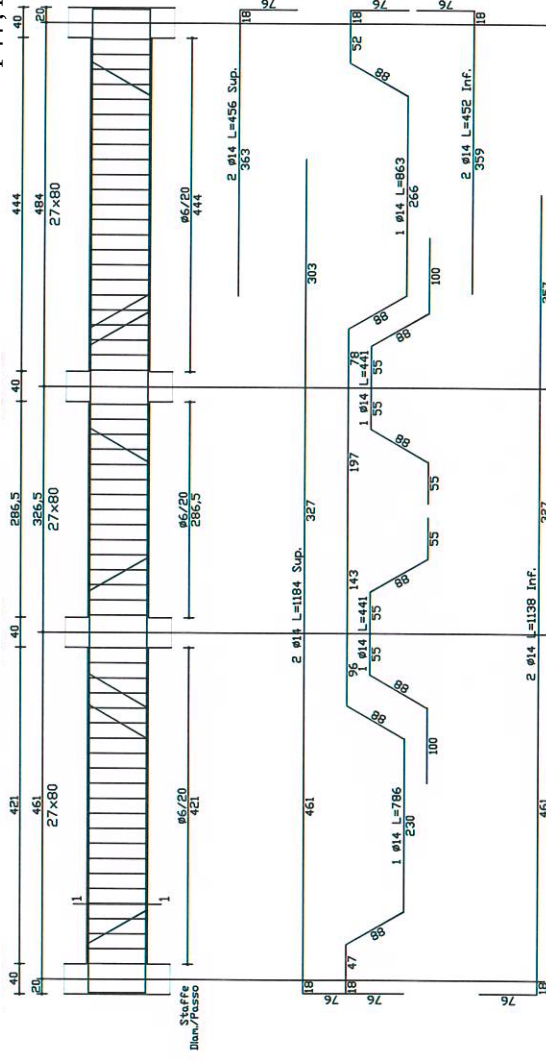
Impalcato quota 395,0

P41, P1

P42, P2

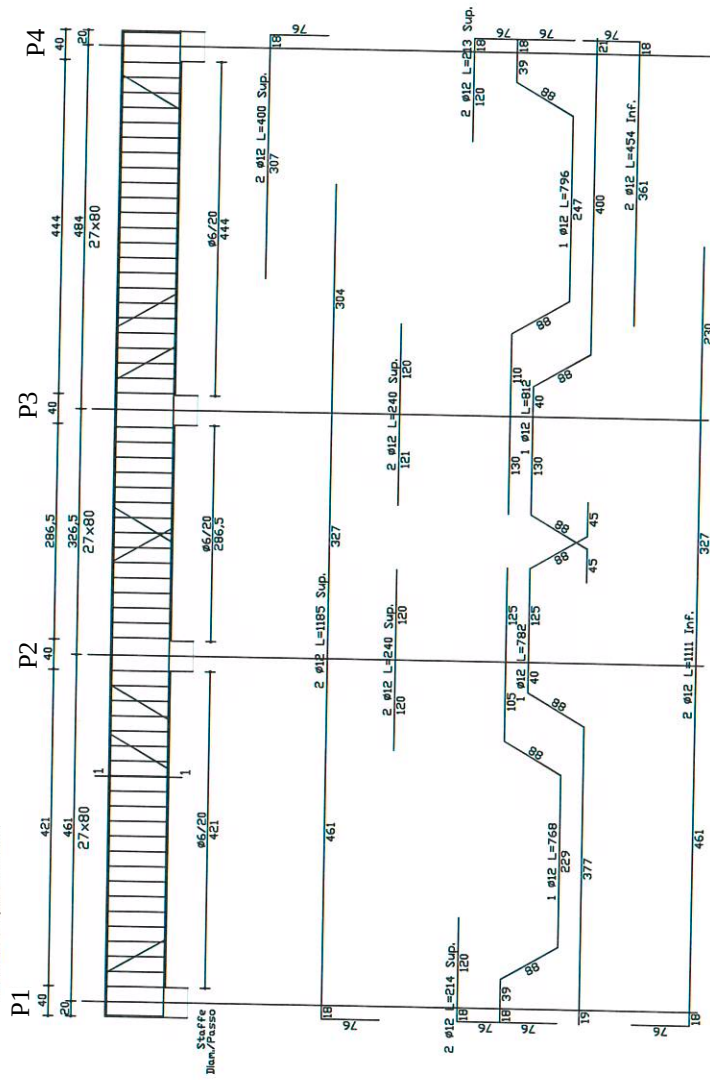
P43, P3

P44, P4

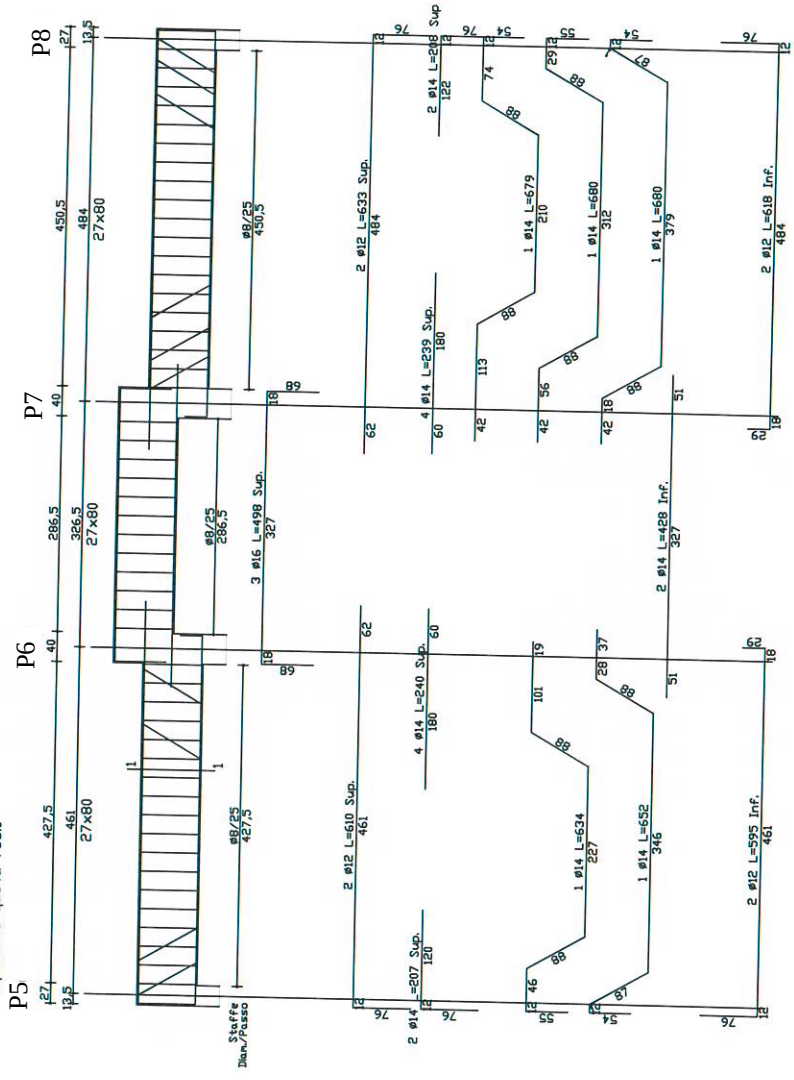


Armature travi piano sottotetto  
Scuola elementare  
Quota +755,00 m

Travata: 51  
Impalcato quota 755.0

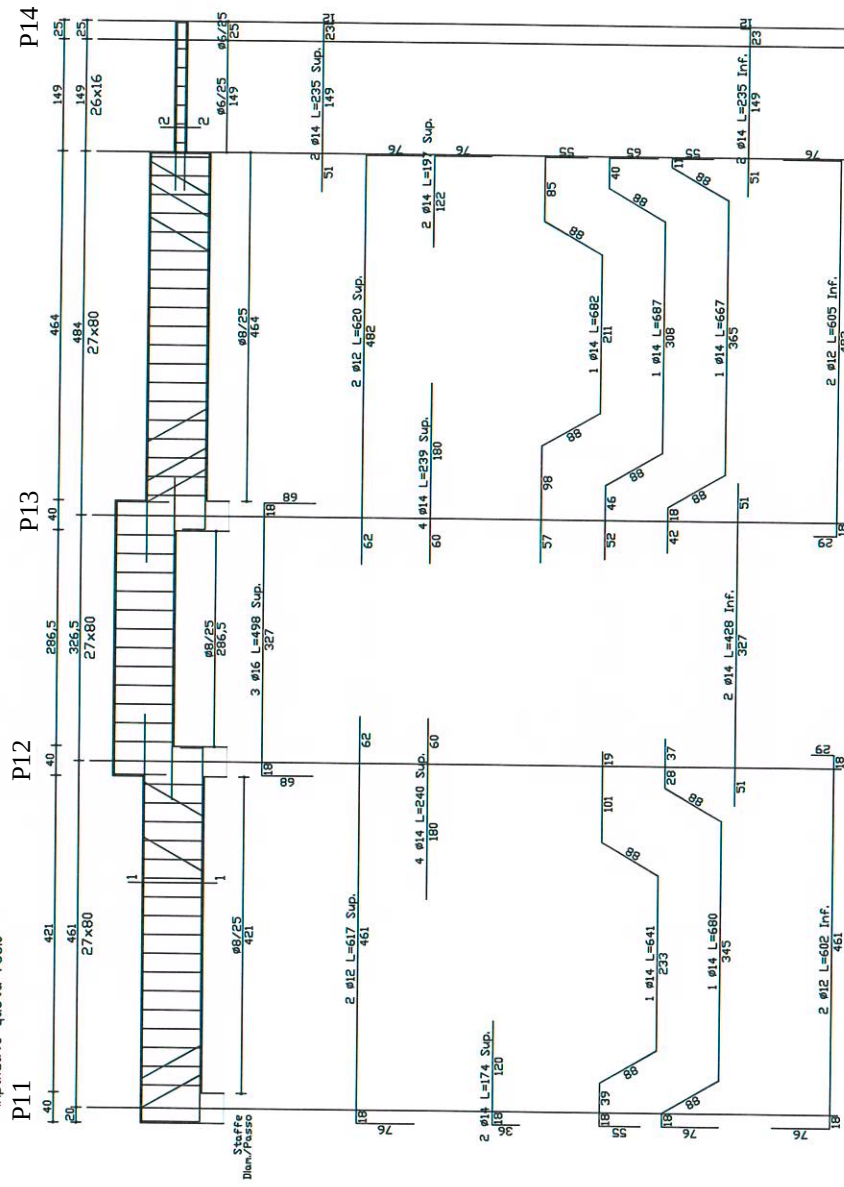


Travata: 54  
 Impalcato quota 755.0



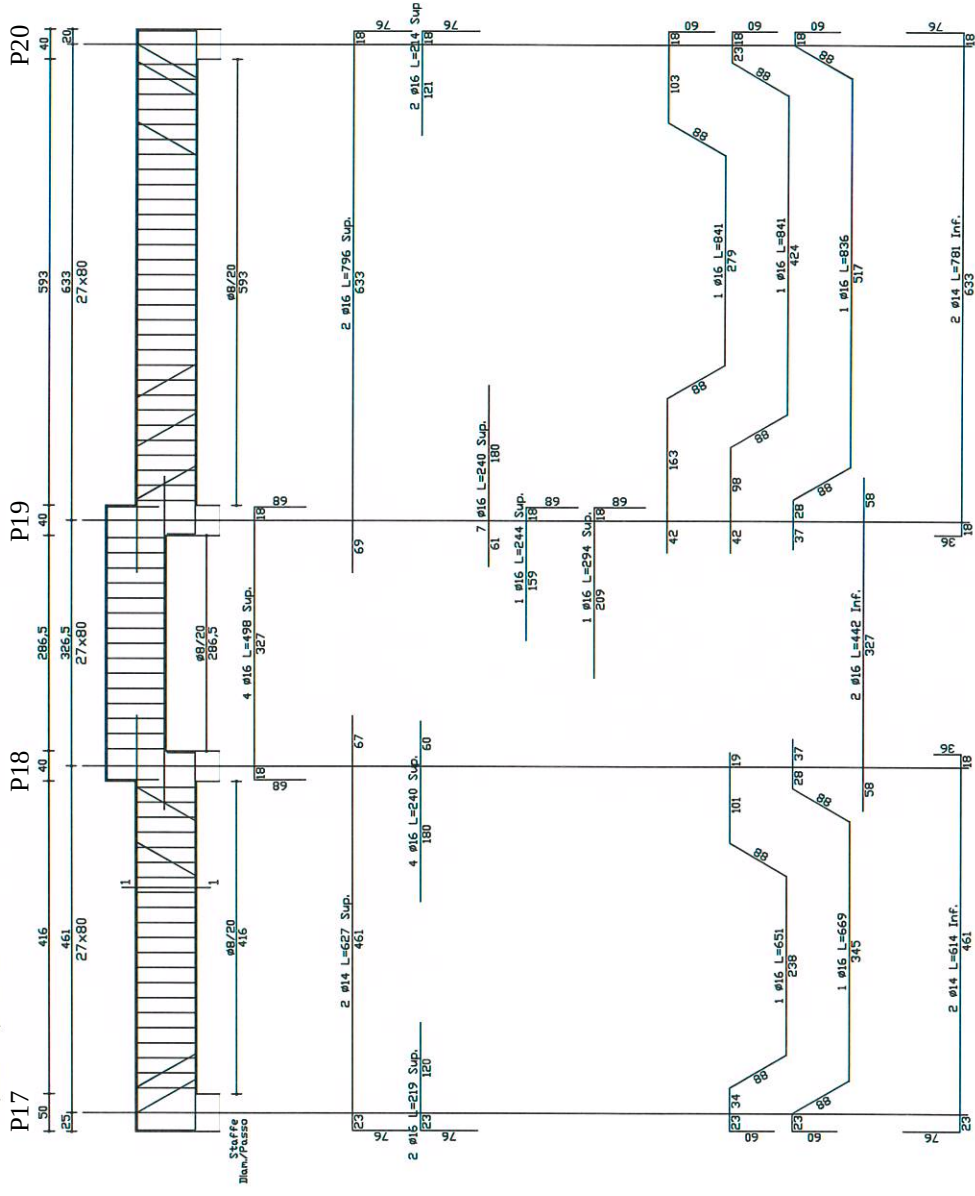


Travata: 55  
Impalcato quota 755.0

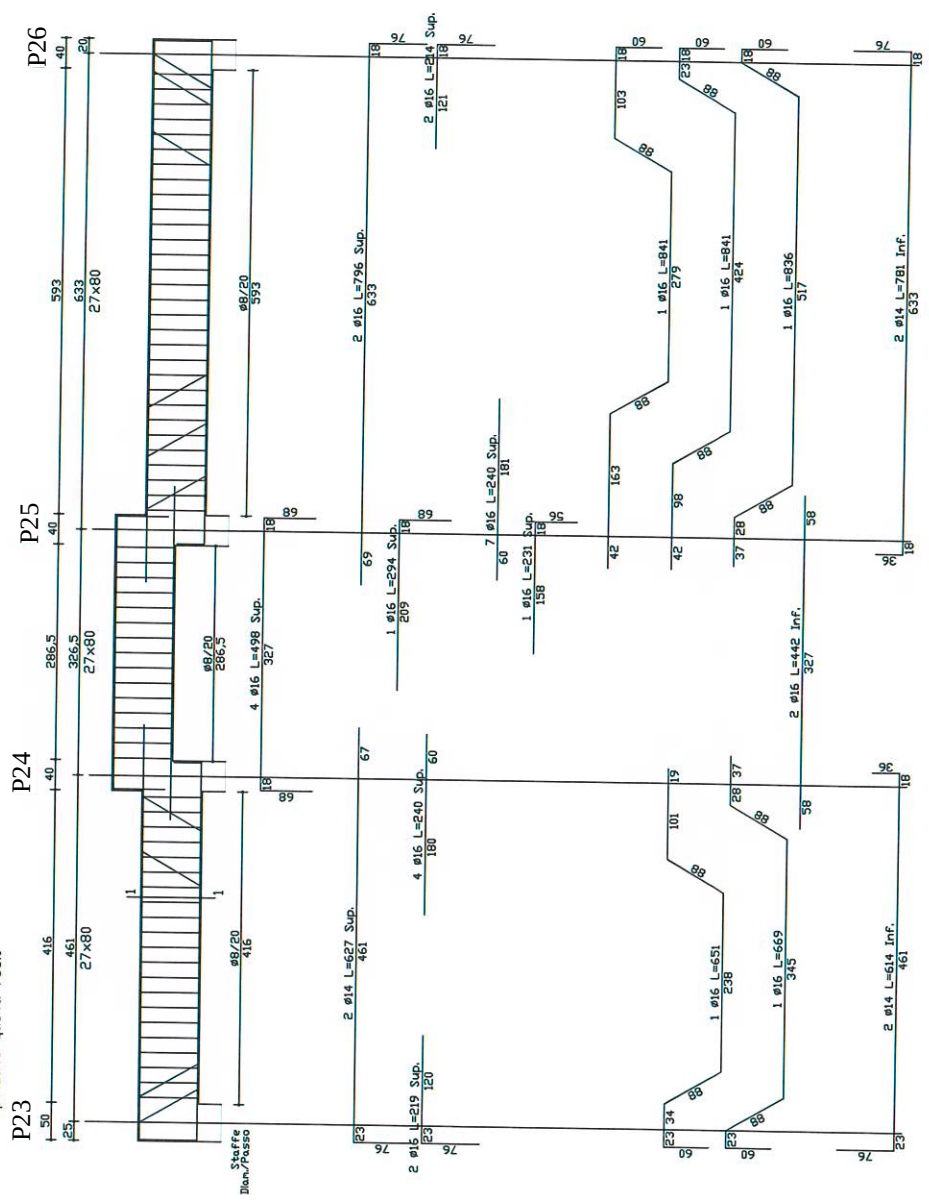


Travata: 57

Impalcato quota 755.0

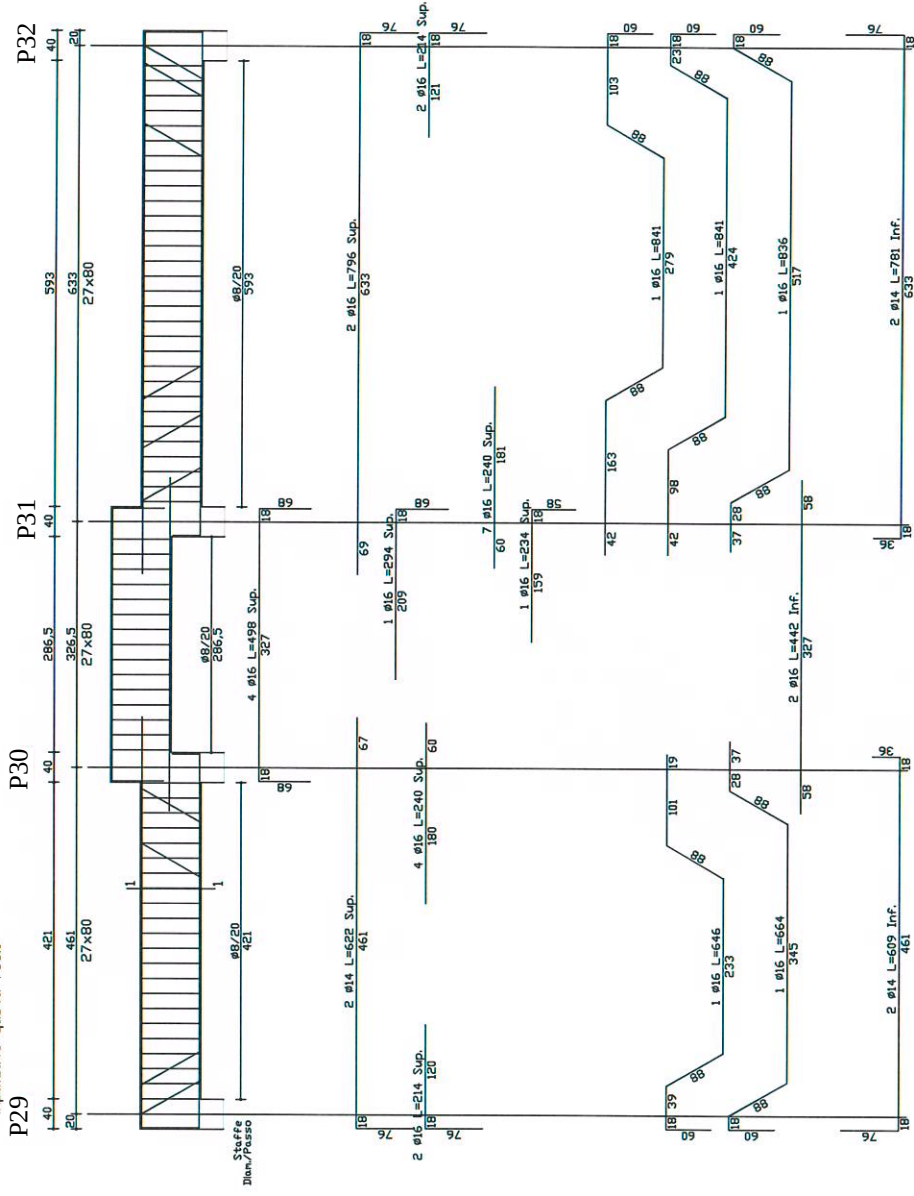


Travata: 58  
Impalcato quota 7550



Travata: 59

Impalcato quota 755.0



Travata: 60  
Impalcato quota 755.0

