



COMUNE DI GROSSETO

Progetto di Restauro e Ristrutturazione del piano terreno e piano primo dell'immobile denominato "EX Garibaldi" a Grosseto

SETTORE LAVORI PUBBLICI
Servizio edilizia istituzionale scolastica e beni vincolati

PROGETTO ESECUTIVO

Descrizione:
STATO MODIFICATO
nuove pavimentazioni

Importo Lavori: - Importo Complessivo: -

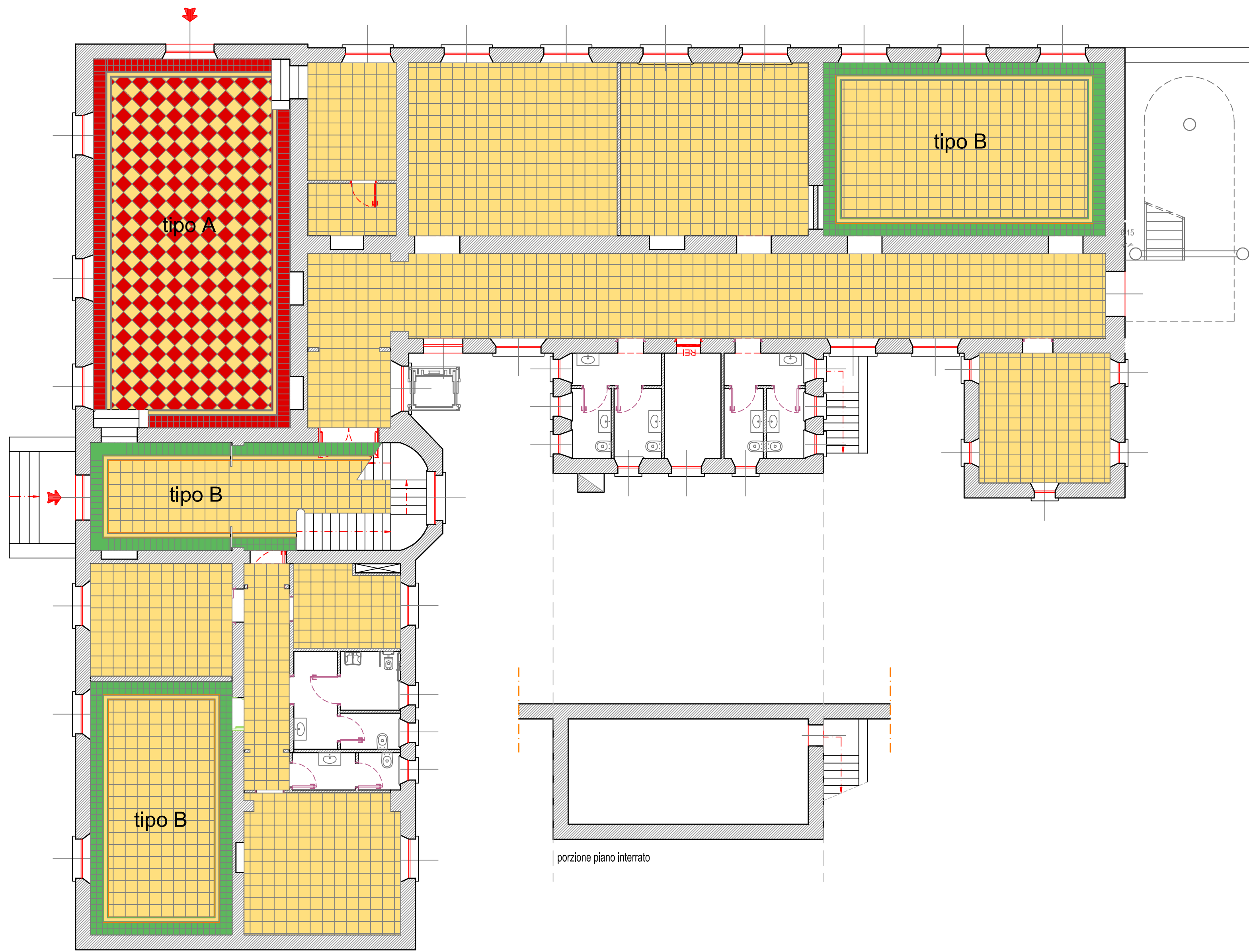
Elaborato: Ed_18a Scala: 1:100 Data: Aggiornamento Giugno 2019

Dirigente LL.PP.
Arch. Marco De Bianchi

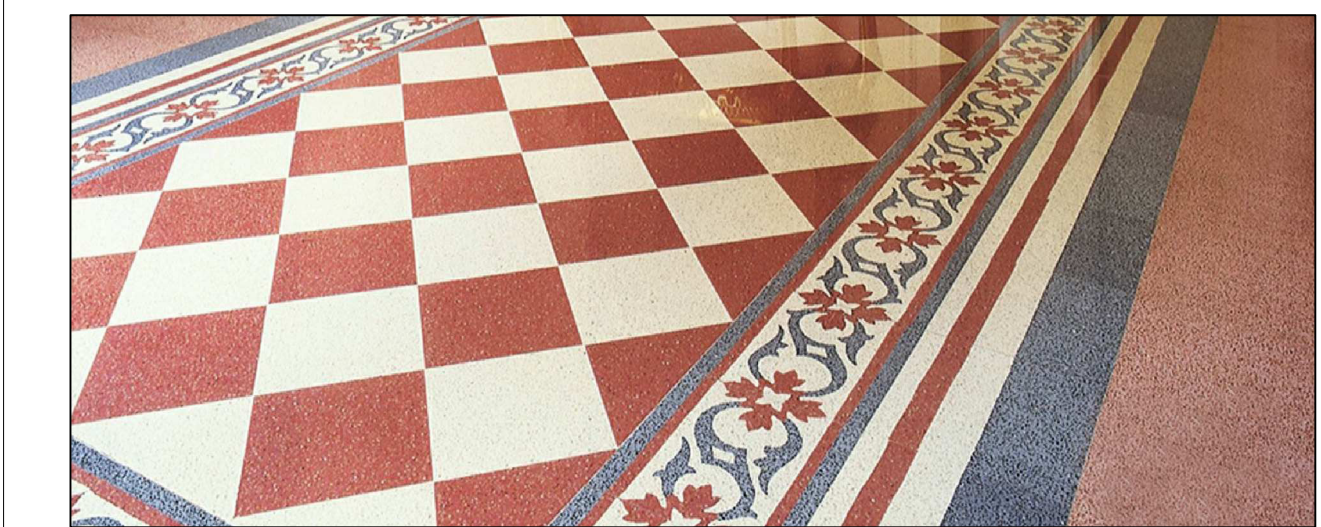
Responsabile del Procedimento:
Ing. Alessandro Villani

Progettista Opere Edili:
Arch. Annalisa Camarri

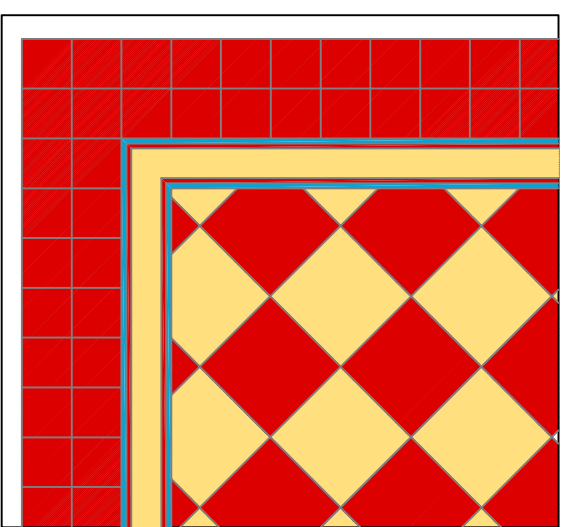
Collaboratori
Paola Lotti



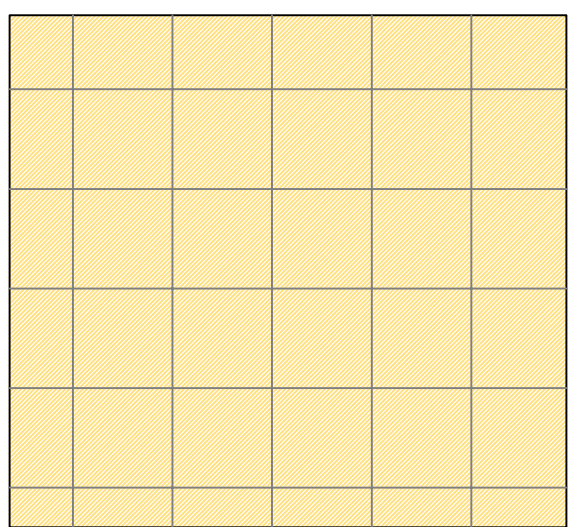
PIANTA PIANO TERRA



tipo A



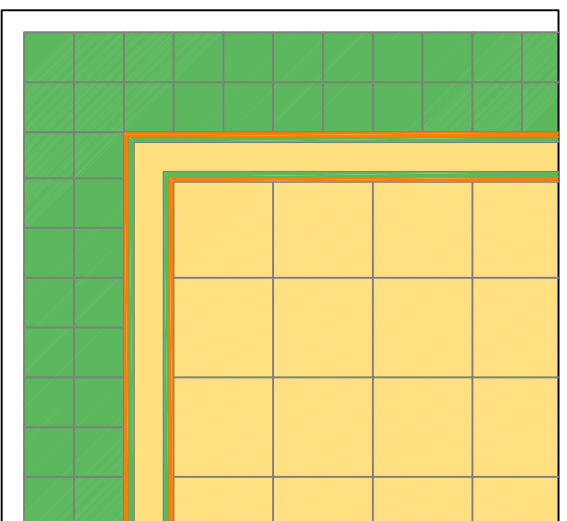
Cornici laterali largh.40 cm.
(2 file piastrelle in graniglia 20x20)
Interno piastrelle in graniglia
posate a 45° dim. 40x40 cm.



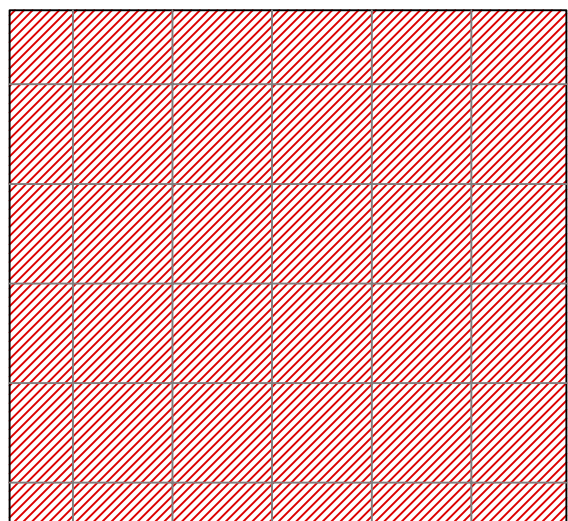
Piastrelle in
graniglia dim.
40x40 cm.
senza cornice
color avorio



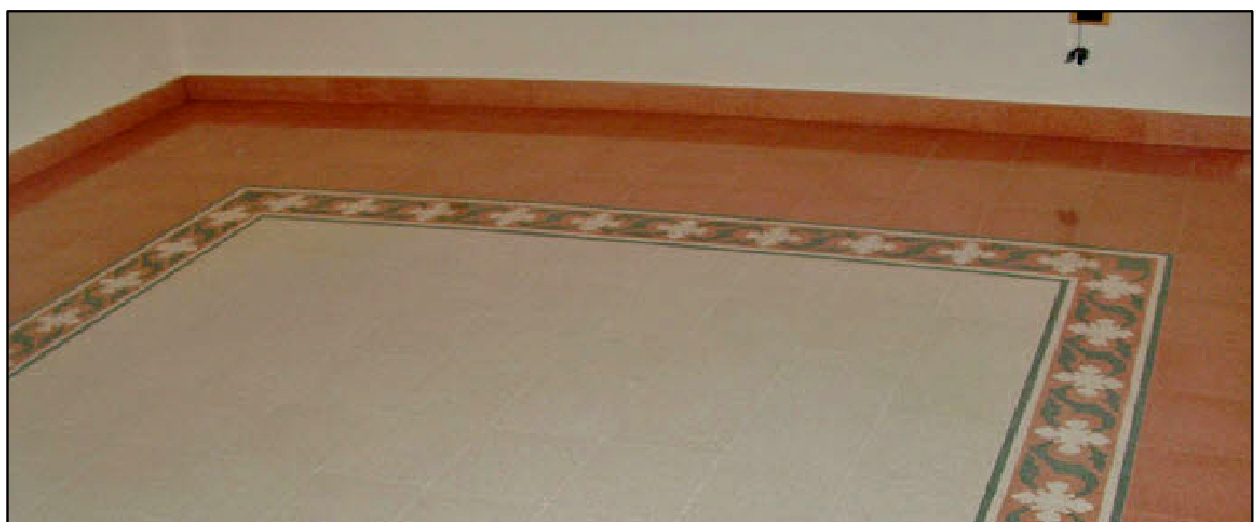
tipo B



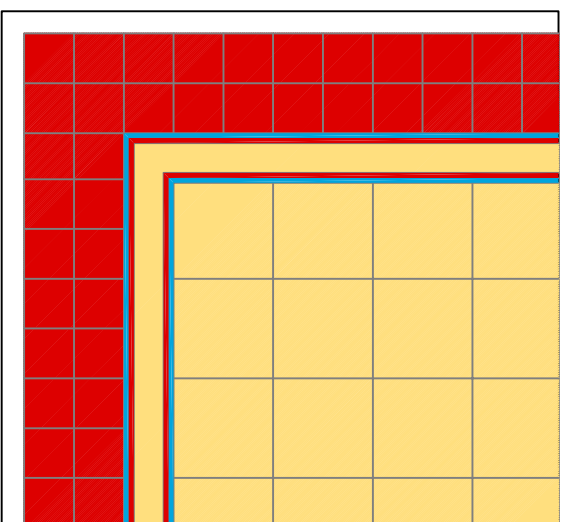
Cornici laterali largh.40 cm.
(2 file piastrelle in graniglia 20x20)
Interno piastrelle in graniglia dim.
40x40 cm.



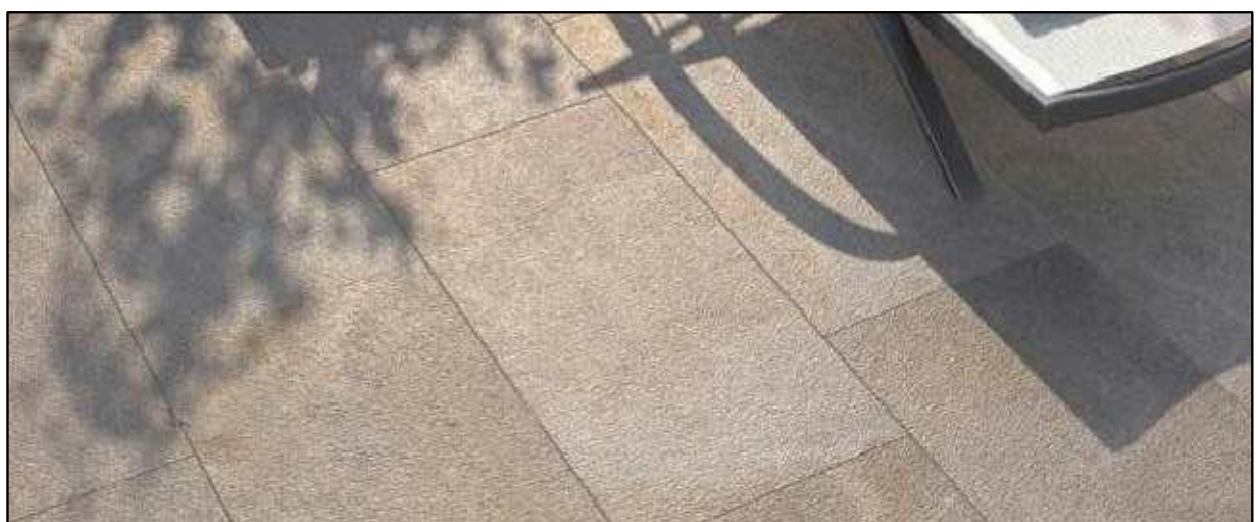
Piastrelle in
graniglia dim.
40x40 cm.
senza cornice
colore rosso



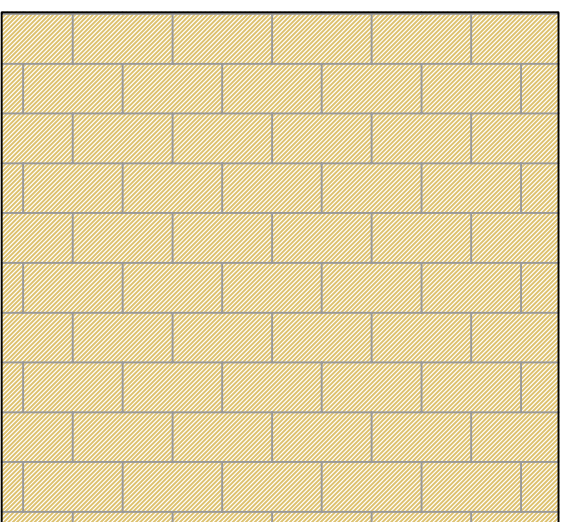
tipo C



Cornici laterali largh.40 cm.
(2 file piastrelle in graniglia 20x20)
Interno piastrelle in graniglia dim.
40x40 cm.

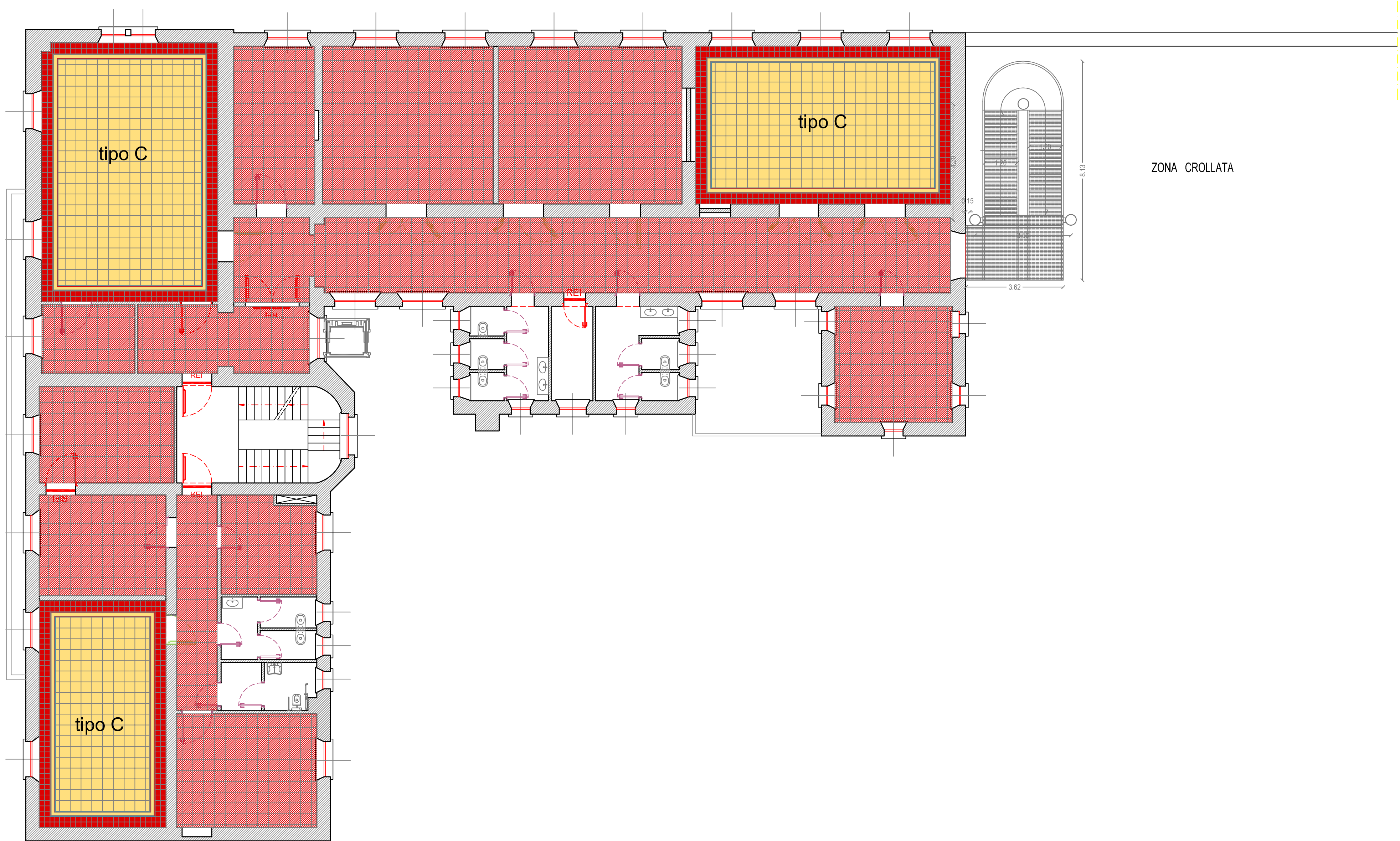


tipo D

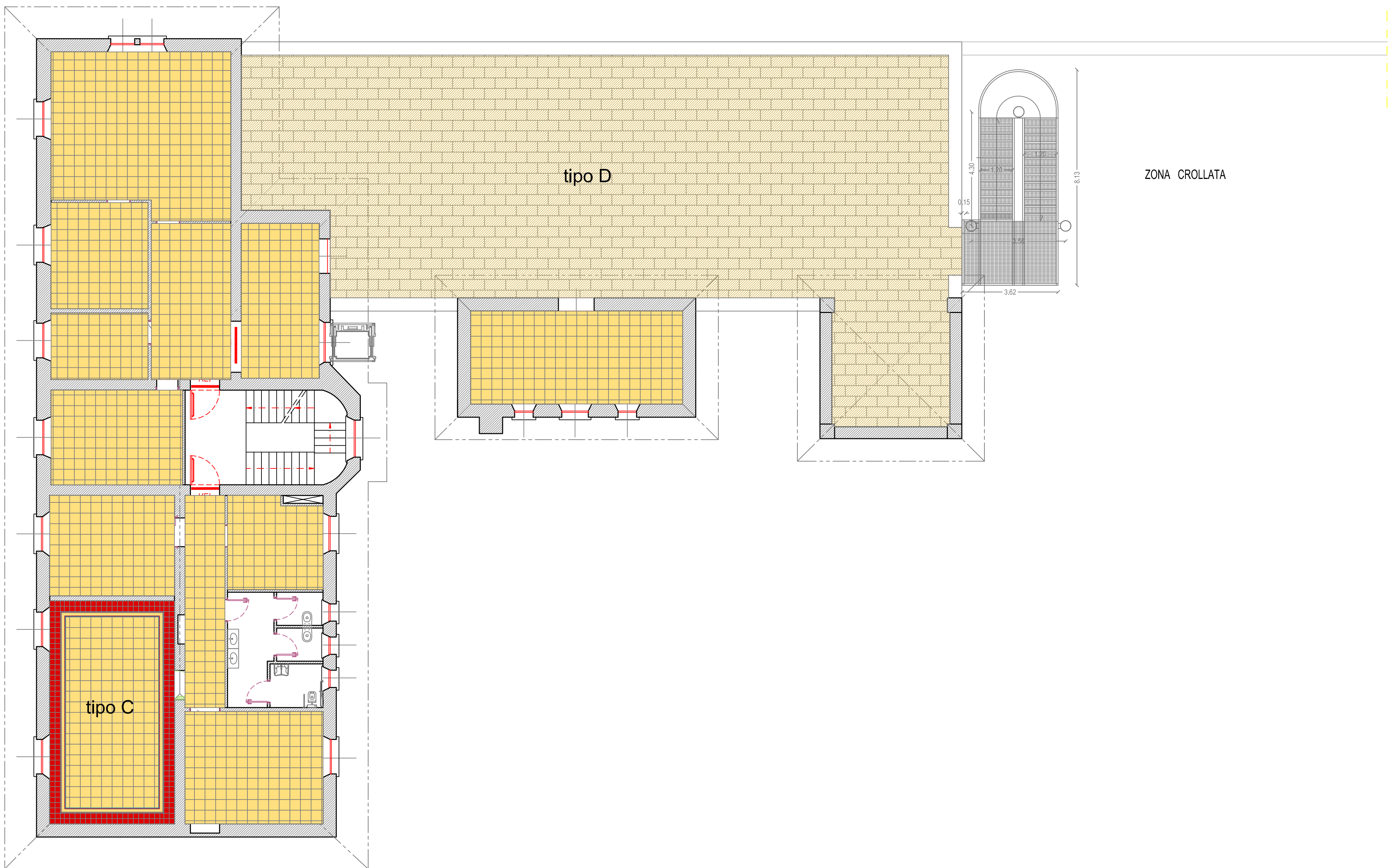


Pavimentazione in gress da
esterno dim. 30x60 cm.

SUPERFICI		
	SUL	Sup.Utile
PIANO TERRA	645,27mq	525,62mq
PIANO PRIMO	645,27mq	511,34mq
PIANO SECONDO	360,00mq	271,60mq
TOTALE	1650,54mq	1298,56mq



PIANTA PIANO PRIMO



PIANTA PIANO SECONDO